

Description

Wall mounted gates, also referred to as pen-stocks are used to close off an opening in a wall or the end of a pipe, and provide a complete seal around the periphery of the opening in the wall or pipe. Generally, seals are Ethylene Propylene Diene Monomer/ Music Note (EPDM) J seals which allow water pressure to force the seal against the seating surface of the frame. Where o-seating pressures occur, the seals are reversed. If both seating and o-seating pressure conditions are present, double seals are used. Ideally this kind of gate should use rising type spindle as the threaded section is out of the fluid.

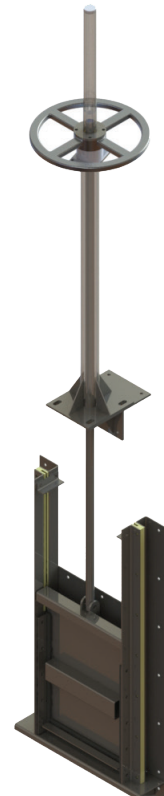
Application

- Wastewater treatment plants
- Water treatment plants
- Mining industry
- Abattoirs
- Food production industry
- Irrigation systems
- Dam walls



Application

- Frame suitable for direct mounting
- Designed and manufactured to suit any size opening
- Gate frame provided with HDPE liner for low friction sliding
- EPDM seal
- Actuated or manual gates provided according to client specification
- Rising or non-rising spindle gates provided according to client specification
- Rigid ACME thread S/S spindle design
- Resilient sealing system with L seal design
- Low maintenance



Performance &

Wall Mounted Gate - Estimated Flow Rates

- Non-standard sizes and gates for higher pressure ratings can be specially manufactured.
- Dimension F varies according to gate design.
- Dimensions should not be used for construction purposes
- All dimensions in mm

MODEL	CHANNEL OPENING		GATE WIDTH (C)	GATE INVERT (D)		GATE TRAVEL (E)	SPINDLE GAP (F)		TORQUE TO OPEN GATE(N.m)
	WIDTH (A)	DEPTH (B)		STANDARD	FLUSH		MIN	MAX	
SINGLE SPINDLE									
WMG25	250	250	450	623	540	260	33	48	100
WMG30	300	300	500	731	648	310	33	48	100
WMG40	400	400	600	947	864	410	33	48	100
WMG50	500	500	700	1163	1079	510	33	48	100
WMG60	600	600	800	1378	1295	610	36	53	120
WMG70	700	700	900	1594	1511	710	36	53	120
WMG80	800	800	1000	1810	1727	810	36	53	120
WMG90	900	900	1100	2026	1943	910	36	53	120
WMG10	1000	1000	1200	2242	2159	1010	46	61	120
WMG11	1100	1100	1300	2458	2375	1110	46	61	150
WMG12	1200	1200	1400	2674	2591	1210	46	61	150
WMG14	1400	1400	1600	3106	3023	1410	92	112	150
WMG15	1500	1500	1700	3322	3238	1510	92	112	150
DOUBLE SPINDLE									
WMG18	1800	1800	2000	3969	3886	1810	92	112	180
WMG20	2000	2000	2200	4401	4318	2010	92	112	180

