

# THICKENER TANK



## Description

Thickeners are used to thicken sludge from settling tanks in both municipal and industrial purification plants. Increasing the concentration of the sludge through slow moving arms and vertical pickets, the sludge scrapers cover 100% of the tank floor. This also enables liberation of gas bubbles and aggregation of flakes of sludge.

The system is installed inside a circular tank and is mainly composed of a central drive shaft made of steel and complete with flanges for connection to a movable trellis and to the scraper blades of the sludge drain well. Movable trellis are equipped with vertical pickets and bottom scraper blades. The central cylinder is used for the sewage intake and is anchored to the walkway.

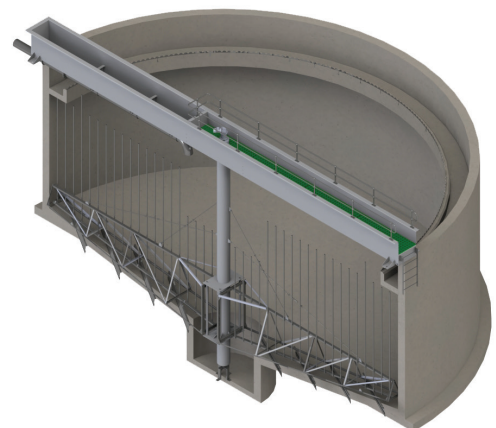
## Application

- Wastewater treatment plants
- Water treatment plants
- Mining Industry
- Food & Beverage



## Features & Benefits

- Fast and precise installation
- Available for tanks of up to 40m in diameter
- Scum removal device option is available
- Hot dip galvanized carbon steel, 304 L / 316 L SS
- High removal efficiency of sludge and floating matter
- Ease of maintenance
- Easily retrofitted to existing basins



+1 360 . 314 . 2692  
+1 360 . 521 . 7524



jlewis@centexp.com  
www.centexp.com



7600 NE 47th Avenue  
Vancouver, WA 98661 - USA



# Performance & Specification

## Thickener Settling Tank- Estimated Flow Rates

- We manufacture to suit non-standard openings
- Table data subject to change to suit civil and flow conditions
- Theoretical capacities
- All dimensions in mm

| MODEL | INTERNAL TANK Ø (A) | SIDE WALL DEPTH (B) | SPEED (mm/min) | MOTOR POWER (kw) |
|-------|---------------------|---------------------|----------------|------------------|
| THK4  | 4000                | 3500 ~ 4500         | 1500 ~ 2000    | 0.18             |
| THK5  | 5000                | 3500 ~ 4500         | 1500 ~ 2000    | 0.18             |
| THK6  | 6000                | 3500 ~ 4500         | 1500 ~ 2000    | 0.25             |
| THK7  | 7000                | 3500 ~ 4500         | 1500 ~ 2000    | 0.25             |
| THK8  | 8000                | 3500 ~ 4500         | 1500 ~ 2000    | 0.25             |
| THK9  | 9000                | 3500 ~ 4500         | 1500 ~ 2000    | 0.25             |
| THK10 | 10000               | 3500 ~ 4500         | 1500 ~ 2000    | 0.25             |
| THK11 | 11000               | 3500 ~ 4500         | 1500 ~ 2000    | 0.25             |
| THK12 | 12000               | 3500 ~ 4500         | 1500 ~ 2000    | 0.25             |
| THK14 | 14000               | 3500 ~ 4500         | 1500 ~ 2000    | 0.37             |
| THK16 | 16000               | 3500 ~ 4500         | 1500 ~ 2000    | 0.37             |
| THK18 | 18000               | 3500 ~ 4500         | 1500 ~ 2000    | 0.37             |

