

ROTATING DRUM SCREEN



Description

Rotating Drum Screen can be used in most waste water, industrial processes, and food industries for filtration systems that require the removal of fine solid material ranging from 0.25 mm to 3 mm in diameter. The waste water to be treated flows through the inlet pipe to the feed basin, which ensures that the waste water flows equally over the entire surface of the rotating filtering drum. The waste particles in the waste water get caught up by the slow rotating Filtering drum, which rotates the waste towards the scraper blade, which is then discharged at the chute system for further processing. The filtered waste water flows through the spacing of the filtering drum into the collection basin and through the outlet pipe. In the case of power outages or equipment repair the feed basin has an emergency overflow system which will direct the flow into the outlet pipeline. In the internal center of the filtering drum there is a spray system which assists in the internal cleaning of the filtering drum.

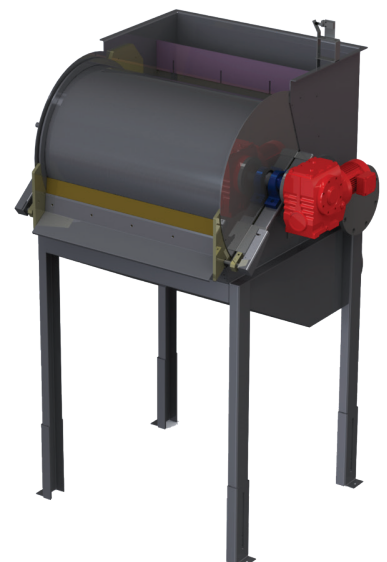
Application

- Wastewater treatment plants
- Water treatment plants
- Irrigation network
- Sludge plants
- Mining Industry
- Abattoir



Features & Benefits

- Screening sizes between 0.25 – 3mm
- Mobile or fixed application available.
- Wedge wire filter
- Emergency overflow included
- Small foot print



+1 360 . 314 . 2692
+1 360 . 521 . 7524



jlewis@centexp.com
www.centexp.com



7600 NE 47th Avenue
Vancouver, WA 98661 - USA



Performance & Specification

Rotating Drum Screen- Estimated Flow Rates

- We manufacture to suit non-standard openings
- Theoretical capacities
- Table data subject to change to suit civil and flow conditions
- All dimensions in mm

MODEL	A	B	C	D	E	F	G	INLET	OUTLET	ESTIMATE WEIGHT	MOTOR KW
DS 40	1205	1295	1400-1500	1082	900	410	540	100NB	150NB	250	0.35
DS 60	1205	1295	1400-1500	1082	1000	620	760	150NB	200NB	280	0.55
DS 100	1205	1295	1400-1500	1082	1400	1020	1170	200NB	250NB	350	0.75
DS 150	1205	1295	1400-1500	1082	1900	1520	1680	250NB	300NB	400	0.75
DS 200	1205	1295	1400-1500	1082	2400	2030	2190	300NB	400NB	480	1.1

SPACING (mm)	0,5	0,5	0,75	1	1,25	1,5	2	2,5
DS 40	1205	1295	1400-1500	1082	900	410	540	100
DS 60	1205	1295	1400-1500	1082	1000	620	760	150
DS 100	1205	1295	1400-1500	1082	1400	1020	1170	200
DS 150	1205	1295	1400-1500	1082	1900	1520	1680	250
DS 200	1205	1295	1400-1500	1082	2400	2030	2190	300

