

HAND RAKE SCREEN



Description

The hand raked bar screen is manually operated and used within small wastewater treatment plants or to protect fine mechanical screens. The coarse manual hand screen generally has a bar spacing of 20 to 100 mm. In addition, such screens are commonly used in a head of works as an emergency by-pass screen, located next to a mechanical screen, should there be power outage or if the mechanical screen is down for maintenance. This robust screen can be manufactured from either mild steel galvanized or in 304L & 316L stainless steel.

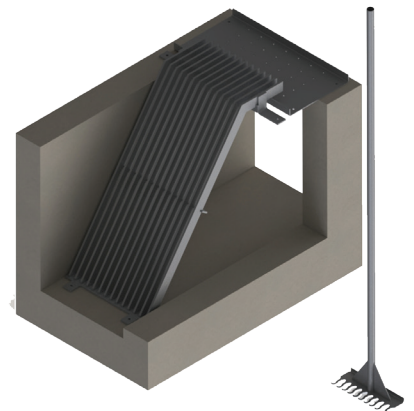
Application

- Wastewater treatment plants
- Water treatment plants
- Irrigation systems
- Sludge plants
- Mining industry
- Abattoirs
- Food & Beverage



Features & Benefits

- Four or more cleaning rakes
- Specific materials of construction to suit the application: 3CR12, 304SS, 316SS
- Inclined at 70°-90° to the horizontal



+1 360 . 314 . 2692
+1 360 . 521 . 7524



jlewis@centexfp.com
www.centexfp.com



7600 NE 47th Avenue
Vancouver, WA 98661 - USA



Performance & Specification

Hand Rake Screen - Estimated Flow Rates

- We manufacture to suit non-standard openings
- Theoretical flow rate Rate m³/ h @ 30% blinding
- Flow velocity 0.8m/sec
- Table data subject to change to suit civil and flow conditions.
- All dimensions in mm

MODEL	CHANNEL SIZE		BAR SPACING				
	WIDTH (A)	DEPTH (B)	20	30	40	50	100
MHS800	800	1200	1440	1507	1619	1657	2485
MHS100	1000	1200	1852	1914	2033	2047	3070
MHS120	1200	1200	2677	2743	2892	3041	4561
MHS140	1400	1200	3446	3728	3934	1487	6280
MHS150	1500	1200	4474	4737	5104	5359	8040
MHS200	2000	1200	5897	6316	6763	7034	10550
MHS250	2500	1200	8210	8772	9357	9862	14800

