

BIO-FILTER



Description

Rotary distributors are used in the biological wastewater treatment process through an application known as the trickling filter method. This procedure has good adaptability and is able to effectively handle peak shock loads. Rotary Distributors consist of a rock bed, normally 3 to 4 meters in depth, with enough space in between the rocks to allow for the unobstructed circulation of air. The effluent is sprinkled over the bed packing, which is coated with a biological slime. As the liquid trickles over the packing, oxygen and dissolved organic matter within the wastewater diffused into the film to be metabolized by the micro-organisms in this slime layer. End products, such as NO_3 , CO_2 etc., diffuse back out of the film and appear in the filter effluent. The unit is completely seal free and requires minimal maintenance. The implementation of an effective bio filter system allows for optimal removal of 40 to 50 % of the original suspended solids as well as the removal of nearly all original dissolved organics and in-organics left over from primary treatment.

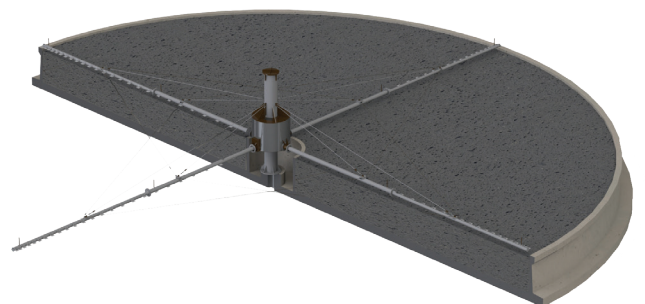
Application

- Wastewater treatment plants
- Water treatment plants
- Mining Industry
- Food & Beverage



Features & Benefits

- Distributor arms are flanged for easy replacement
- Adjustable spreader plate controls the flow and distribution of waste water over the media
- Bearings are designed for easy access and lubrication
- All lubrication points are easily accessible
- Seal free unit that requires minimal maintenance
- Simple to maintain and operate
- Hydraulically driven



+1 360 . 314 . 2692
+1 360 . 521 . 7524



jlewis@centexfp.com
www.centexfp.com



7600 NE 47th Avenue
Vancouver, WA 98661 - USA

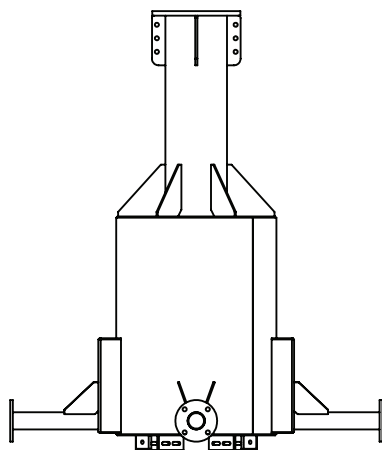
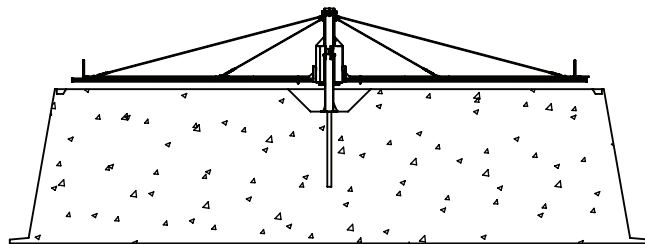


Performance & Specification

Bio-Filter - Estimated Flow Rates

- We manufacture to suit non-standard openings
- Theoretical capacities
- Table data subject to change to suit civil and flow conditions
- All dimensions in mm

MODEL	INTERNAL TANK Ø (A)	FLOW SPEED (m ³ /h)	HYDRAULIC LOADING RATE (m ³ /m ² .d)
RBF10	10	44	40
RBF18	18	142	40
RBF28	28	343	40
RBF38	38	631	40



Centre Column

