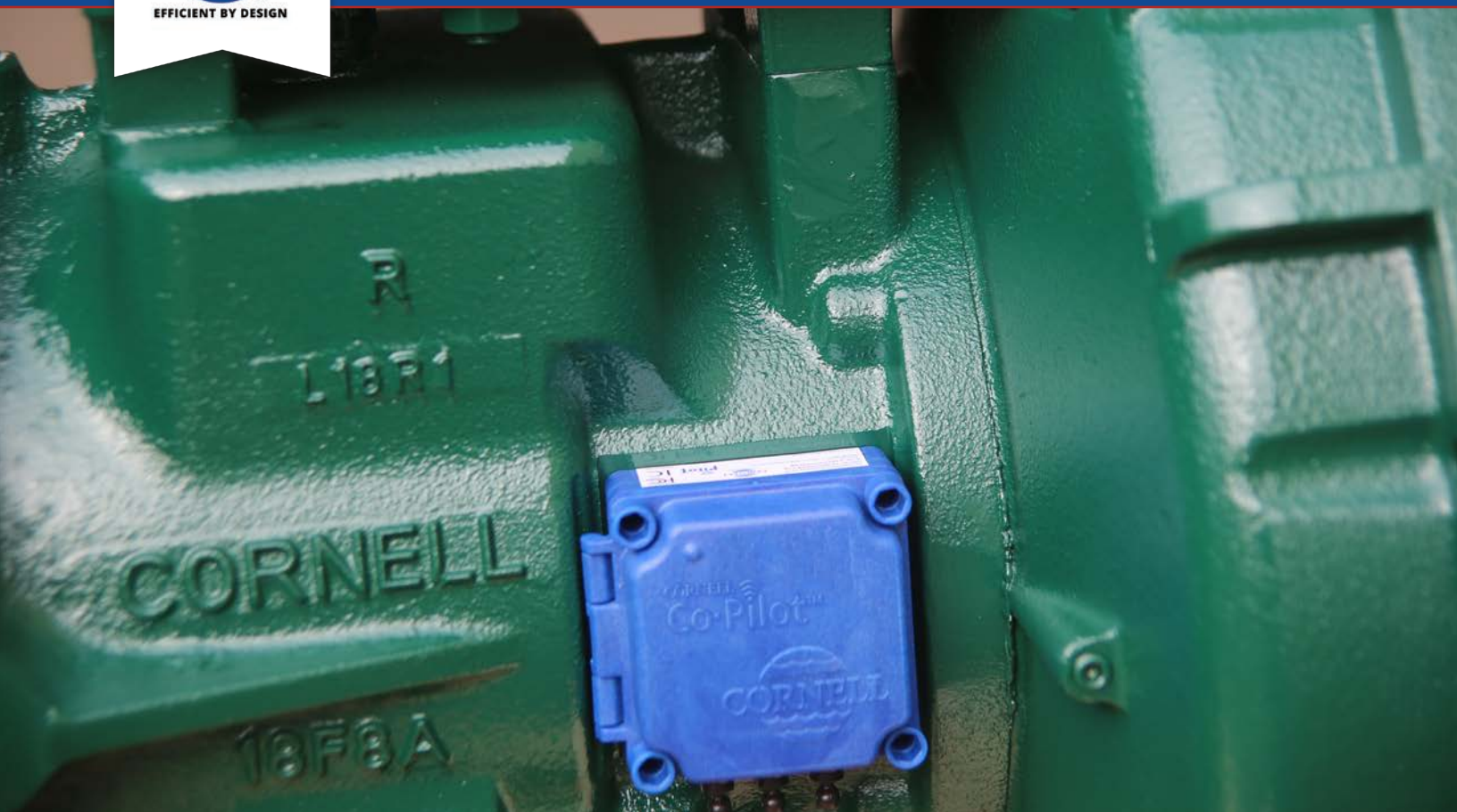




CORNELL PUMP COMPANY

CO-PILOT

INDUSTRIAL INTERNET OF THINGS PUMP MONITOR



CORNELL
Co·Pilot™



EFFICIENT BY DESIGN



CO-PILOT SYSTEM



Connect via Cell



Bluetooth® Enabled

CORNELL
Co-Pilot™



5 Sensor Inputs



THE POWER OF IIOT

Cornell Co-Pilot connects to your pump to monitor temperature, vibration, and location via battery! Co-Pilot also works with continuous power to track additional parameters and interface with control systems such as SCADA. The Co-Pilot brand stands for Pumps Industrial Internet of Things and represents our commitment to innovative design and customer satisfaction.

USE THE CO-PILOT TO:

- Plan maintenance
- Check operation
- Reduce manual inspections
- Track pump location
- Demonstrate run conditions to customers on warranty claims
- Improve run time through maintenance program

MONITORING AT YOUR FINGER TIPS

Monitor via desktop, iOS or Android apps to see pump performance, receive alarms for out of condition operation, and see last GPS location of pump. Makes it easy to see your pump's performance.

CORNELL CO-PILOT ALLOWS YOU TO:

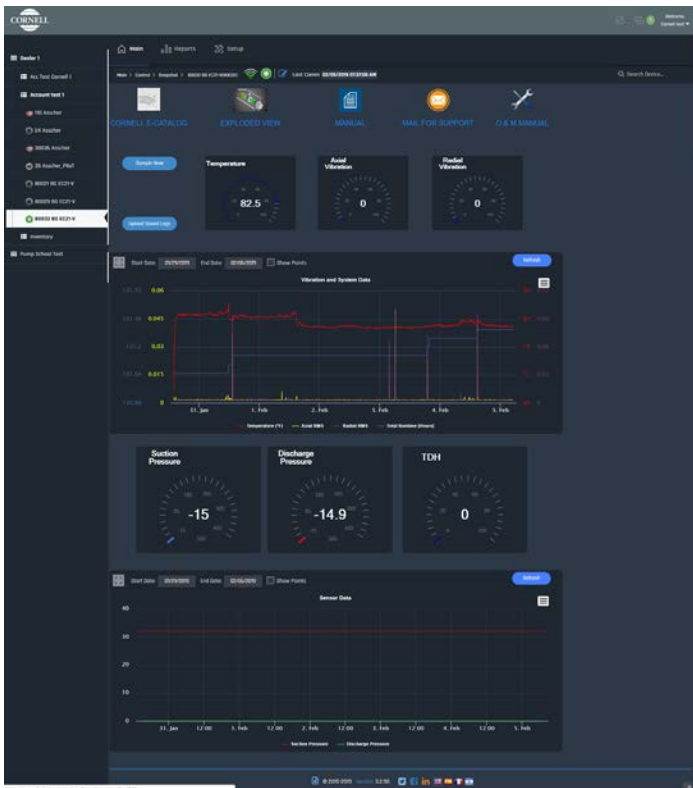
- Cloud monitor single and multiple pumps via IIOT
- With battery power, monitor temperature, vibration, and GPS location
- Through external power, additionally monitor pressure, flow, start/stop operations and more*
- Track data over time via web-based and mobile apps
- Real-time pump data for maintenance, monitoring performance degradation, and critical conditions
- Receive alerts for preset running conditions

*Requires external sensors; contact Cornell for details.

CO-PILOT SPECIFICATIONS



Screenshots from the mobile Co-Pilot app.



Co-Pilot desktop version screenshot.

TECHNICAL SPECIFICATIONS

COMMUNICATION

- 4G LTE cellular cloud connectivity
- Monitor all connected pumps from a single app
- GPS Location Information
- Usable in North America currently with planned updates for Europe, Middle East, Asia, Sub-Saharan Africa & Australia

ON -BOARD MONITORING

- 3-axis vibration monitoring [Inch/Sec]
- Temperature $\pm 5^{\circ}\text{F}$ / $\pm 2.7^{\circ}\text{C}$
- Battery voltage [V]
- Up to 5 additional inputs to connect external sensors

NOTIFICATIONS

- Vibration threshold cross (Axial/Radial RMS)
- Vibration velocity amplitude threshold cross in any of the FFT-selected frequencies
- Operational time threshold cross
- Temperature threshold cross
- Other thresholds set for additional sensors (contact Cornell for information on connecting additional sensors)

DIMENSIONS/ OPERATIONS/STANDARDS

- 3.4" x 3.4" x 1.9" (86mm x 86mm X 48mm)
- Robust insulated enclosure
- IP65 compliant (dust tight and protected against water from a nozzle)
- FCC Part 15 and RoHS compliant
- Temperatures from -22°F / -30°C to 158°F / 70°C

POWER

- External DC power: 12-24 VDC; up to 20 samples/ hour and 8 cloud updates per day
- Back-up Battery operable. Three AAA Lithium batteries provide power when external power is not installed or is temporarily unavailable. Provides approximately three months of service at four samples an hour and two cloud uploads per day. Batteries are replaceable for peace of mind.

Get started at
CO-PILOT.CORNELLPUMP.COM



MARKET AND PRODUCT LINE



AGRICULTURE



FOOD PROCESS



INDUSTRIAL



MINING



MUNICIPAL



WATER
TRANSFER



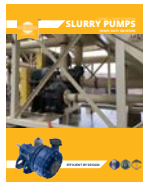
REFRIGERATION



CONSTRUCTION



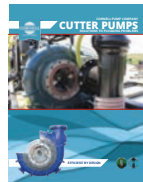
SLURRY



SLURRY SM



MANURE



CUTTERS



SELF PRIMING



HIGH FLOW



MX SERIES



N SERIES



CYCLONE™



EDGE™



HYDRAULIC
SUBS



IMMERSIBLE



CD4MCU



RUN-DRY™



PRIMING
SYSTEMS



CYCLOSEAL®

Cycloseal® and Redi-Prime® are Registered Trademarks of Cornell Pump Company.

Cornell pumps and products are the subject of one or more of the following U.S. and foreign patents:
6,074,554; 6,036,434; 6,079,958; 6,309,169.

CORNELLPUMP.COM
©2019 CORNELL PUMP COMPANY



Cornell Pump Company
Clackamas, Oregon, USA
P: +1 (503) 653-0330
F: +1 (503) 653-0338

AUTHORIZED CORNELL PUMP DISTRIBUTOR



+1 360 . 314 . 2692
+1 360 . 521 . 7524



jlewis@centexfp.com
www.centexfp.com



7600 NE 47th Avenue
Vancouver, WA 98661 - USA

